

Cover Story

FOCUS EMU
Online

Oct. 27, 2009 issue

New EMU multi-purpose facility expands opportunities for year-round sports

By Geoff Larcom

Back to Current Issue
FOCUS EMU
Online

A group of Eastern Michigan University staff members, coaches, athletes, regents and administrators were on hand Oct. 20 to celebrate the groundbreaking of the University's new multi-purpose indoor sports practice facility.

The facility, which will be an inflatable dome, will open doors to sports teams around the University and in the Ypsilanti community, offering a year-round opportunity to play and practice.



Among the attendees was Jon Steinbrecher, commissioner of the Mid-American Conference. He said such buildings are now viewed as essential elements for collegiate athletic programs at this level.

BREAKING GROUND: A groundbreaking ceremony for the new \$3.9 million multi-purpose indoor sports practice facility took place Oct. 20. Participants (from left) were EMU Women's Soccer Coach Scott Hall, Mid-American Conference Commissioner Jon Steinbrecher, Regent Gary Hawks, Diane Keller, president and CEO of the Ypsilanti Chamber of Commerce; Regents Thomas Sidlik and James Stapleton, EMU Athletic Director Derrick Gragg, EMU President Susan Martin, Regent Phil Incarnati and Regents Chair Roy Wilbanks.

"Once, facilities like this were luxuries," Steinbrecher said. "That day is long past. Now, they are necessities."

Of the six teams in the MAC West Division, which includes Central Michigan, Western Michigan, Toledo, Northern Illinois, Ball State and EMU, only Ball State now lacks a similar facility.

Derrick Gragg, EMU's athletic director, said the facility is crucial for team development and in recruiting.

"This is a great day in EMU athletic history..." Gragg said. "This will go a long way toward helping level the playing field."

Women's Soccer Coach Scott Hall said the new facility will enable his team to train year-round, noting that his team had often played in the rain this season. Hall called the facility "a huge recruiting advantage," but also noted the facility is available for other students, along with the community

at large.

"It's another doorway for students to find their way to the university," he said.

The new multi-purpose facility, which will cost \$3.9 million, will be located near the corner of Huron River Drive and Westview Drive, near the northeast corner of Rynearson Stadium.

The facility will be an air-supported structure that is 410 feet long, 210 feet wide and 75 feet tall. It will include a welcome center (1,000 square feet) and convertible space (86,000 square feet) that can be configured for a football field, an international soccer field or four youth soccer fields.

Diane Keller, president and CEO of the Ypsilanti Chamber of Commerce, praised EMU's foresight and outreach in building the facility, adding that its various events and programs would help lure additional visitors into hotels and area businesses.

"It's a huge economic engine," she said.

Eastern Michigan officials had visited the University of Colorado to view a similar facility there, and said they came away with a helpful perspective on getting the most value out of EMU's new facility.

Eastern Michigan University President Sue Martin noted that several options and building sizes were considered for the facility, which has been discussed around campus for many years.

After obtaining additional information, including potential community interest in the facility, regents and University officials determined that a slightly larger facility with upgraded parking and other enhancements would make it more functional and user-friendly, Martin said.

The budget for the project — the building cost is \$3.27 million, the parking lot \$437,000, and the walkway and welcome center \$210,000 — was submitted to the State of Michigan Joint Capital Outlay Subcommittee in July, and was approved in early September.

The facility's primary use will be for varsity athletic programs, providing an indoor training location for football, the women's soccer team, baseball, softball and men's and women's golf.

Yet, it also will be utilized by EMU's club sports and intramural programs. Additionally, due to its larger size, it can be divided into four soccer fields, three of which will be leased on an ongoing basis to the community for youth soccer and other recreational programs. Leasing revenues are projected to cover yearly maintenance and operating costs.

The project is being funded by capital reserves and the 2005 tuition increase, 4 percent of which was specifically dedicated to enhance the university's infrastructure. The 4-percent increase (or approximately \$4.4 million per year) has accumulated for the past four years, creating a pool of \$17.6 million that will be used for various building projects.

The new facility is scheduled for completion in the spring of 2010.

After she spoke, Keller joined the commissioner, President Martin, regents and others for the first symbolic turn of the shovel. Then, people carefully replaced the divots. The football team would soon be practicing on that

field.

Feature

FOCUS EMU
Online

Oct. 27, 2009 issue
**Procedures in place
 to distribute limited
 supply of H1N1 flu
 serum to campus**

By Pamela Young



Due to the limited amount of H1N1 flu serum provided to Eastern Michigan University, the Snow Health Center staff has instituted several procedures to deal with the vaccination shortage.

At this time, only EMU patients considered at high risk will be vaccinated. This includes pregnant women, persons with certain chronic medical conditions such as asthma, health care workers, first responders, and those who live with or care for infants younger than 6 months of age.

High-risk patients are asked to go to the vaccination clinic Wednesday, Oct. 28; or Thursday, Oct. 29, 4-7:30 p.m., in the lower level of Snow Health Center. The clinic is accessible through the north door, which faces the parking lot.

Those at high risk who are unable to make the clinic hours should call Snow Health Center at 487-1122 to schedule an appointment, provided the serum is still available.

According to an update from the Washtenaw County Health Department, the county's vaccine supply is currently about 30 percent of what was expected at this date. Limited amounts of nasal spray (FluMist) and multi-dose vials of flu shots are being allotted to the county on a weekly basis.



Gold

Ellen Gold, executive director of University Health Services, said EMU should receive more doses in the next several weeks.

"We requested a few thousand doses, but only received 200, because the vendors are behind in manufacturing and distribution," she said. "When we get more doses, we'll send out an announcement and schedule additional clinics."

Gold says President Obama's declaration that the H1N1 flu virus is a national emergency doesn't mean that people should panic.

"The President's announcement is intended to make it easier for hospitals and emergency rooms to bypass the red tape for setting up separate vaccination clinics," said Gold. "This will allow hospitals to speed up treatment without disrupting regular emergency room visits."

Gold said that people might want to call their family doctor to see if the H1N1 vaccine is available. If not, it might be available at your local county health department. Washtenaw County, at its clinics, is limiting its vaccine to pregnant women; children 6 months to 4 years old; those living with children 6 months old or younger; children 5 to 18 years old with conditions such as asthma, and EMS and health care workers with direct patient contact.

Area health departments can be reached at the following:

Oakland: (800) 434-3358

Macomb: (586) 466-7923

Wayne: (734) 727-7163

Livingston: (517) 546-9850

"We appreciate everyone's patience and willingness to work with us on this issue," said Gold. "We will keep you informed as more vaccine becomes available. I'd like to thank members of the campus community for their understanding."

Feature

FOCUS^{EMU}
Online

Oct. 27, 2009 issue
**EMU boosts financial
 aid to more than
 \$30.4 million in
 2010-2011**

By Geoff Larcom

Back to Current Issues
FOCUS^{EMU}
Online

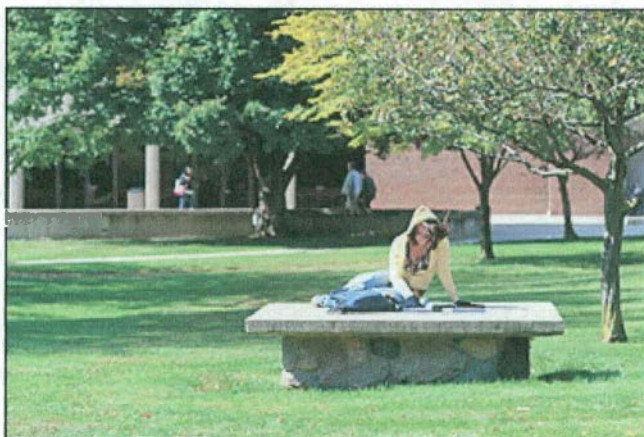
Eastern Michigan University will offer more than \$30.4 million in financial aid in the next academic year, increasing the amount of scholarships, awards and grants given to students.

"The increase in financial aid signifies our continued commitment to students, along with our awareness of the challenge of paying for college today," said EMU President Sue Martin. "The increase is a key aspect of next year's budget, and is at the center of our mission to serve our students."

Martin also cited EMU's tuition increase of 3.8 percent this fall, the lowest percentage increase of any of Michigan's 15 public universities.

Bernice Lindke, vice president for student affairs and enrollment management, noted the aid increase is part of a trend at EMU.

"In just three years, the University has increased student financial aid by almost \$9 million, or 42 percent," she said.



HITTING THE BOOKS: This Eastern Michigan University student catches up on her studies outside near Mark Jefferson. The EMU Board of Regents approved more than \$30.4 million in financial aid for students for 2010-2011. The funding will go for student scholarships, awards and grants.

Next year's increase represents a jump of more than \$4.8 million, or 19 percent, from this year's originally approved budgeted total of more than \$25.5 million in aid, and an increase of more than \$1.4 million, or 5 percent, from this year's forecasted actual total of nearly \$29 million in financial aid.

This year's financial aid total was revised upward by about \$3.4 million because of EMU's increase in enrollment. New and returning student enrollment for fall 2009 increased by 933 students over last year, a rise of more than 4 percent. Eastern Michigan bestowed 698 more academic achievement awards than the previous year, along with 455 more need-based awards.

This year, the additional funding is helping to meet the increased number of new and returning students qualifying for academic scholarships, along with assisting the increased number of students applying for need-based aid and appealing for additional funding because of a job loss. Those trends are expected to continue next year.

The breakdown of the financial aid for 2010-2011 is as follows: scholarships, awards and grants, \$18.1 million; athletic grants-in-aid, \$7 million; federal and state matches, \$772,000; and more than \$4.4 million in graduate student aid.

The EMU Board of Regents approved the increase at its meeting Oct. 20.

Feature

FOCUS EMU
Online

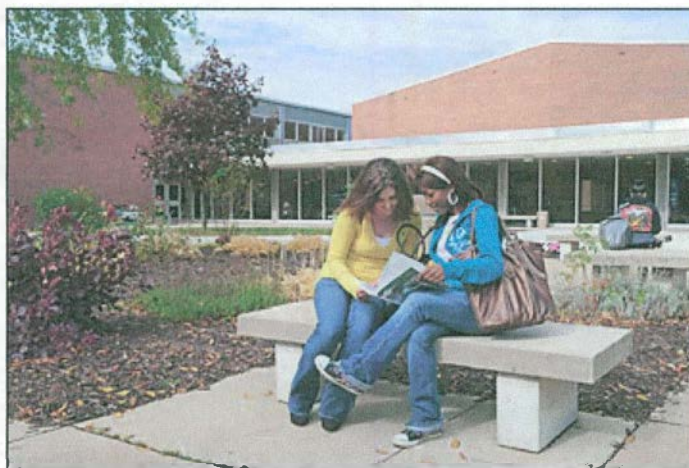
Oct. 27, 2009 issue
**EMU targets Strong
 Hall in state capital
 outlay request**

By Geoff Larcom

Back to Current Issue
FOCUS EMU
 Online

Eastern Michigan University has identified Strong Hall as its top building project priority in its capital outlay request to the state of Michigan for the 2010-2011 fiscal year.

Strong Hall is part of EMU's Science Complex, and houses the geology and geography, and the physics and astronomy departments. The facility was built in 1957 and has not received any significant improvements or renovations since its construction.



STRONG STUDIES: Eastern Michigan University sophomores Carol Anteau, of Carlton, and Alicia Holmes, of Detroit, figure out their winter term class options while seated on a bench in front of Strong Hall last week. The EMU Board of Regents has identified Strong Hall as its top building project priority in its capital outlay request to the state of Michigan for the 2010-2011 fiscal year.

The estimated cost to renovate Strong Hall is \$38 million. The University's cost share would be \$9.5 million, or 25 percent of the total project cost, and would be funded from University reserves.

"This project, along with the \$90-million, self-funded addition and renovation of the Science Complex, which is in progress, demonstrates the university's

commitment to the sciences," said EMU President Sue Martin.

The Strong Hall project would include renovation of the entire existing structure of 87,500 square feet. It would modernize classrooms and lab space, and introduce new technology while creating flexible use spaces for research and instruction. Fire suppression and other mechanical, electrical and structural systems would be replaced and upgraded.

The modernized and reconfigured space would provide students with much-needed gathering space for impromptu meetings with faculty and classmates. The improvements also will provide flexibility in classroom configuration to adapt to the changing instructional environment. The Science Complex project would connect to the west end of Strong Hall.

The University also is requesting an increase of 3.6 percent to its annual state appropriation for the 2010-2011 fiscal year. EMU's budgeted state appropriation for this fiscal year is \$76.2 million.

The EMU Board of Regents approved the state capital outlay and state appropriations requests at its meeting Oct. 20.

Feature

FOCUS EMU
Online

Oct. 27, 2009 issue
**EMU Regents
approve tuition
differential grant
program for out-of-
state veterans**

By Ward Mullens

Back to Current Issue
FOCUS EMU
Online

United States military veterans will be able to attend Eastern Michigan University at resident tuition rates under a new award called Vet Connect.

The board approved the award at its regular meeting Oct. 20.

"By establishing the EMU Vet Connect Award, Eastern Michigan University continues its strong commitment to welcome veterans to our campus and support them in getting their degrees," said Bernice Lindke, vice president for student affairs and enrollment management.

"This award is a fantastic way to honor our veterans and another example of EMU's commitment to being a veteran friendly campus," said Shaftone Dunklin, director of veteran services at EMU. "It is great that our university officials recognize that our veterans serve and defend our country, and not individual states."

The grant, which excludes reserve programs, will be based on 24 credit hours per year of the difference between in-state and out-of-state tuition. Awards will be made to non-resident veterans who have been honorably discharged or medically separated from service with at least one year of service.



Lindke

In 2008, EMU began providing in-state tuition provisions for active duty members of the U.S. armed forces. EMU was recently named one of the country's top "military friendly" schools by G.I. Jobs Magazine.

Feature

FOCUS EMU
Online

Oct 27, 2009 issue
**Meet the world
 during International
 Week on campus**

By Lisa Donovan



The Eastern Michigan University community is invited to experience cultures from around the globe without the hassle of airport security at EMU's International Week, which runs through Friday Oct. 30. In the Student Center and in classrooms all over campus, participants will get a taste of the food, entertainment, language and customs of other countries and learn about some of the issues they face.

"We want students to have an awareness and understanding of other countries and cultures," said



INTERNATIONAL CELEBRATION: Eastern Michigan University celebrates International Week with a variety of events on campus.

Betsy Morgan, EMU's director of international initiatives. "We want them to be conscious of culturally different perspectives on their way to becoming global citizens."

Morgan is co-chairing the International Week planning committee with Julia Beaver, international student specialist.

Faculty members are encouraged to bring the world into their classrooms with activities such as lectures, presentations and ethnic potluck lunches. In addition, myriad events are planned for the entire campus community. Participants can learn a greeting or how to write their name in another language, test their world knowledge at Justin's Quiz Table, or take part in a game show.

Following is a list of highlights for International Week, which began Oct. 26.



MODEL UN TALK: Kristen Smith (second from right), playing ambassador of the United Kingdom, makes a point to Charles Elliott (third from left), playing the ambassador of Russia, during a debate about "The Situation in Iraq." The debate

The week kicked off with **United Nations Day Celebration** Oct. 26 in the Student Center Ballroom. A flag-raising ceremony was followed by the Children's Institute Celebration of Diversity and Unity, a reading of the UN proclamation and a Model UN.

The College of Education presented "Internationalizing Teacher Education Curriculum," which showed how EMU is providing teacher education students with

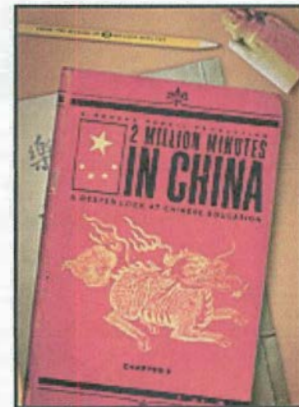
was part of the United Nations Day Celebration on campus Oct. 26.

the most relevant training for their new profession. First-day activities

concluded with an awards luncheon.

Treat your taste buds to some intriguing new flavors at DC One's **International Food Celebrations**. General Tso chicken with vegetarian egg rolls was the Asian fare sampled Oct. 26. Wrap your mouth around Mexican tamales, churros and enchiladas Oct. 27. Gyros and tandoori chicken are on the menu Oct. 28. Try German specialties such as smoked bratwurst, German potato salad, red cabbage and sauerkraut Oct. 29. Finish your global culinary adventure with stuffed cabbage rolls, spaetzle and boiled potatoes Oct. 30.

Enjoy the sights, sounds and film styles of other countries at **The World Film Series**, hosted by EMU's World Languages Department. Some films are in English and others have sub-titles. "Afghan Star" will be shown in the Student Center Auditorium. All other movies will be shown in room 300 of Halle Library. Some of this year's selections include "La Gloire de Mon Pere," "2 Million Minutes in China," "White Light/Black Rain," "Latin Beat: Latino Culture in the United States," and four episodes of "China From the Inside." For a complete listing, visit www.emich.edu/iw/calendar.html.



WORLD FILM: "2 Million Minutes in China" is one of the movies that will shown as part of The World Film Series on campus.

International music will entertain lunchtime diners at the Student Center Eateries, Tuesday, Oct. 27, through Thursday, Oct. 29, 11:30 a.m. to 2 p.m. The musical variety includes the oud, one of the most popular stringed instruments in Middle Eastern music; an international DJ will spin tunes; and African djembe (drums) will be played. International physical activities set to music will round out the week Oct. 29.



GREETINGS FROM VERSAILLES:

Eastern Michigan University students pose for a photo in Versailles, France,

as part of a previous Study Abroad trip. A Study Abroad Fair is scheduled Oct. 27, 10 a.m. to 2 p.m., in room 310 of the Student Center.

Discover opportunities to earn EMU credits while learning in another country at the **Study Abroad Fair** hosted by Academic Programs Abroad Tuesday, Oct. 27, 10 a.m. to 2 p.m., room 310, in the Student Center. Program directors, exchange partners, financial aid representatives and returning students will be on hand to help students find out if a study abroad program is right for them.

Add your voice to the **Human Rights Panel Discussion**

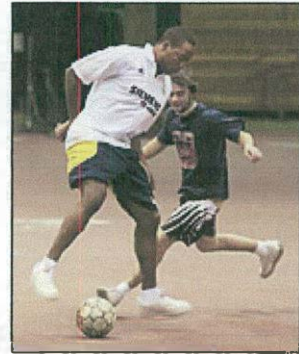
Wednesday, Oct. 28, 11 a.m. to 2 p.m., room 300, in the Student Center. Learn how people in other countries struggle to attain some of the basic human rights we enjoy in

the United States every day.

Get involved in the **International Business Panel Discussion** Thursday, Oct. 29, 4-5 p.m., room 201, at the College of Business. Discover some of the important global issues faced by new and seasoned business practitioners.

Jack Kay, EMU provost and executive vice president of academic affairs, will present **"Excelling as a Global University: Town Hall Meeting,"** Friday, Oct. 30, 1-2 p.m., in the Student Center Auditorium. Kay has experienced life in 46 countries around the world and developed an international program at the University of Michigan-Flint.

Cheer for your favorite EMU team as they play one of the world's most popular games: soccer. Eight-person teams of international and American students from EMU will compete in the **EMU World Cup Soccer Tournament**, Oct. 31-Nov. 1, in Bowen Field House. Students can participate as a student organization, a group of friends, residence hall or dorm group, or a fraternity or sorority. The winning team will be awarded an EMU World Cup trophy.



GOAL!!: Students will participate in the **EMU World Cup Soccer Tournament** in Bowen Field House.

For more information, contact Julia Beaver at jbeaver4@emich.edu or Justin Meilgaard at jmeilgaar@emich.edu. For more information on International Week events, please visit www.emich.edu/iw/calendar.html.

Feature

FOCUS EMU
Online

Oct. 27, 2009 issue
Bathhouse Series
 highlights work of
 three professional
 writers

By Lisa Donovan



Three inventive talents will provide the Eastern Michigan University community with a first-hand glimpse into their creative writing and art worlds at this year's Bathhouse Reading Series, sponsored by the English and art departments. They will perform public readings of their work and interact with students in the classroom.

"Bathhouse events are essential to involving our students in a contemporary, dynamic literary culture that directly reinforces our curriculum," said Christine Hume, associate professor of English. "Creative writing requires a familiarity with practices and contexts beyond the immediate educational environment."

Hume is co-directing the reading series with Carla Harryman, an assistant professor in the English department.

Every year, the Bathhouse Series invites budding and seasoned writers, artists, editors, collaborators, critics and translators to campus. Hume and Harryman selected this year's participants based on material they are teaching in their 200- and 500-level courses.

"We look for writers who will inspire students, sharpen their engagement with language and its potencies, and open up the world of the artist and thinker," said Hume.

For many students, the Bathhouse series is their first in-person encounter with professional writers. Hume said students often come away from the events feeling inspired, stimulated and pleasantly surprised at how much they learned.

"In a world that doesn't often or immediately reward its artists, it's important and thrilling for students to envision their future as writers by having the opportunity to converse with professional writers," said Hume.

The 2009 Bathhouse Reading Series schedule is as follows:



Kapil

Bhanu Kapil, who writes at the intersection of poetry, prose, non-fiction and her own unique style, will conduct a reading Tuesday, Nov. 3, 5 p.m., in Sponberg Theater.

Kapil is the author of "The Vertical Interrogation of Strangers" (Kelsey Street Press, 2001), "Incubation: a space for monsters" (Leon Works, 2006), and "Humanimal, a project for future children" (Kelsey Street Press, 2009). Nationally, she has given readings of her work and presented lectures/panel talks on monsters, cyborgs, architecture and hybridity. Born in the UK to Indian parents, Bhanu lives in Colorado, where she teaches in The Jack Kerouac School of Disembodied Poetics at Naropa University. She also maintains a blog, "Was Jack Kerouac a Punjabi? A day in the life of a Naropa University Writing Professor."

To read a sample of Kapil's writing, go to
<http://www.durationpress.com/leroy.cyborg.htm>

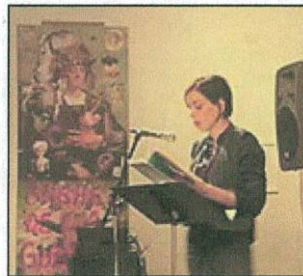
Rodrigo Toscano, the artistic director and writer for the Collapsible Poetics Theater, will present some of his works Monday, Nov. 9, 6:30 p.m., at the Dreamland Theater, 26 N. Washington, Ypsilanti. His group typically performs at a variety of venues in the New York area and beyond.



Toscano

Toscano's latest book is "Collapsible Poetics Theater" (Fence Books; a National Poetry Series 2007 selection). He also is the author of "To Leveling Swerve" (Kruspkaya Book), "Platform" (Atelos), "The Disparities" (Green Integer) and "Partisans" (O Books). His poetry has appeared in "Best American Poetry 2004, War and Peace" (2004 & 2007), "Criminal's Cabinet: An anthology of poetry and fiction" (2004), and "McSweeney's Poets Picking Poets."

Toscano was a 2005 recipient of a New York State Fellowship in Poetry. His poetics plays, body-movement poems and pieces for multiple readers have been performed at the Disney Redcat Theater in Los Angeles, Ontological-Hysteric Poet's Theater Festival, Poet's Theater Jamboree 2007, and the Yockadot Poetics Theater Festival. His radio pieces have appeared on WPIX FM (New York), KAOS Public Radio Olympia, WNYU, and PS.1 Radio. His work has been translated into French, German, Italian and Catalanian. Toscano is originally from Southern California. He works in Manhattan at the Labor Institute and lives in Brooklyn. Samples of Toscano's work are available at <http://epc.buffalo.edu/authors/toscano>



Morrison

In an event co-sponsored by EMU's Art Department, writer and visual artist **Yedda Morrison** will present an artist talk-and-read from her poetry collections Tuesday, Dec. 1, 12:30 p.m., in Room 310A of the Student Center.

Morrison was born and raised in the San Francisco Bay area. Her books include "Darkness, Chapter 1" (Little Red Leaves, 2009), "Girl Scout Nation" (Displaced Press, 2008), "My Pocket Park" (Dusie Press, 2007), "Co" (Collaborations with Bruce Andrews, Roof Books, 2006) and "Crop" (Kelsey Street Press, 2003). Morrison was a founding editor of "Tripwire: a Journal of Experimental Poetics and Visual Art." She has performed and exhibited her work in the United States and Canada, and is represented by Republic Gallery in Vancouver, BC. She currently lives in Montreal. Samples of Morrison's writing and art are available at <http://yeddamorrison.com/>

For more information on these readings, visit www.emich.edu/english/creative-writing/readingseries.php, contact the English Department at 734-487-4220, or e-mail Christine Hume at chume@emich.edu.

Feature

FOCUS EMU
Online

Oct. 27, 2009 issue
**Three faculty, two
 staff members
 granted emeritus
 status**

By Pamela Young

Back to Current Issue
FOCUS EMU
 Online

The Eastern Michigan University Board of Regents granted emeritus status to three faculty and two staff members at its regular meeting Oct. 20.

Faculty and staff may be nominated for emeritus status upon retirement if they have at least 15 years of service. Those granted emeritus status are:

Margaret E. Best, of Ypsilanti, associate professor, university library, who retired in August 2009 after 32 years of service. She was cited for her deep engagement with the instructional mission and learning culture at EMU. In addition, she taught classes as an adjunct faculty member of the English department and frequently presented lectures in children's literature.

Glenda Kirkland, of Southfield, professor of music and dance, who retired in August 2009 after 36 years of service. Her colleagues recognize Kirkland as an artist, teacher and scholar. A graduate of Julliard School, her career included performances with opera companies, oratorio societies and symphony orchestras. As a scholar, she is recognized for her research of the works of African-American composers.



NEWLY INITIATED: Glenda Kirkland, who taught music for 36 years at EMU, received emeritus faculty status Oct. 20. She is flanked by EMU Regent Thomas Sidlik and Provost Jack Kay.

Morrey Kramer, of Ann Arbor, associate professor, accounting and finance, who retired in August 2009 after 25 years of service. Colleagues cite him as a brilliant statistician with tremendous intellectual curiosity and a desire to investigate and solve statistical problems. He also is known for his commitment and dedication to students.

Gerald Davis, of Ann Arbor, library master technician, who retired in December 2006 after 40 years of service. He was responsible for the audio-visual equipment for the university. An expert in mechanical and electrical equipment, he repaired electronic circuitry and computers, and interpreted blueprints, schematics, diagrams and specifications.



Donovan Hahlbrock, of Ypsilanti, library master technician, who retired in September 2009 after 40 years of service. His responsibilities included installing, repairing and operating recording and sound reproduction, and

EMERITS STATUS GRANTED: Donovan Hahlbrock (center), a library master technician at EMU for 40 years, received emeritus staff status Oct. 20. Here, he is pictured with EMU Regent Thomas Sidlik and Provost Jack Kay.

provided regular maintenance on the library's automated storage and retrieval system.

In other business, the board approved the retirement of Emo Honzaki of Ann Arbor, project coordinator for The Learning Center. Honzaki retired in September 2009 after 23 years of service.

Feature

FOCUS EMU
Online

Oct. 27, 2009 issue
**Fifteen EMU
 employees celebrate
 service
 anniversaries in
 October**

By Ron Podell



The following Eastern Michigan University faculty and staff are celebrating service anniversaries during October.

40 years

Richard Paffenroth (39 years) senior purchasing agent, purchasing

35 years

Carol Frisbie (35 years), supervisor, telephone services

Mary Butkovich (34 years), library associate, Halle Library

30 years



Sherry Miller (30 years) administrative secretary,
 School of Engineering Technology

25 years

James Chance (25 years), database specialist senior,
 ICT-network and Web services

Miller

Janet Campbell (25 years), institutional research
 analyst I, Institutional Research and Information Management

20 years

John Lamb (20 years), locksmith/carpenter, general maintenance and
 repair, physical plant

15 years

Larry Gorst (15 years) plumber, undistributed
 maintenance labor

Phyllis Carter (15 years) senior secretary, art
 department



Carter

10 years

Sherry Shopshear (10 years), housing custodial supervisor, HDC Support Services-Housing

Aracely Rosales (10 years) secretary, leadership and counseling

Tracey McDonald (10 years) administrative secretary, HDC Support Services-Housing

Marsha McDonald (10 years) senior secretary, HDC Support Services-Housing

Marjorie Dargo (10 years) senior secretary, Research Development

Mary Chambers (10 years) data specialist, Career Service administration

Feature

FOCUS EMU
Online

Oct. 27, 2009 issue
**Nutrition Tip:
 Strawberries**

From the Office of
 Nutrition Services

Back to Current Issues
FOCUS EMU
Online

Strawberries have more vitamin C than some citrus fruits. They also are high in fiber, folate, potassium and antioxidants, making them a natural means of reducing the chances of heart disease and high blood pressure.

Strawberries, a member of the rose family, are the first fruit to ripen in the spring. On average, there are 200 seeds in a strawberry. The strawberry is the only fruit with the seeds on the outside of the fruit.

A dozen medium strawberries contain 48 calories and includes calcium. Magnesium, potassium, folate, dietary fiber, iron, phosphorous, Vitamin C and Vitamin A also are included in the fruit.



HEALTHY TREAT: Strawberries contain more vitamin C than some citrus fruits. They also are high in fiber, potassium and antioxidants.

Strawberry Salsa is one strawberry recipe you can make and enjoy. Ingredients include 1 cup coarsely chopped strawberries, 1 tablespoon orange juice, 1 teaspoon grated orange peel, 1 green onion, finely chopped; 1 teaspoon Dijon-style mustard, 2 tablespoons dried currants and 2 tablespoons of red wine vinegar. Mix all ingredients in a bowl. Chill and serve with grilled chicken or fish. The recipe makes 1 ½ cups.

For more information on the merits of strawberries, please check out these sources. Strawberries & More. University of Illinois Extension Web site. <http://urbanext.illinois.edu/strawberries/nutrition.html>. Accessed Sept. 27, 2009.

Nutrition Facts. Nutrition Data Web site. <http://www.nutritiondata.com/facts/fruits-and-fruit-juices/2064/2>. Accessed Sept. 28, 2009.

Strawberry Nutrition Facts. Easy Strawberry Recipes Web site. <http://www.easy-strawberry-recipes.com/strawberry-nutrition-facts.html>. Accessed Sept. 28, 2009.

Feature

FOCUS EMU
Online

Oct. 27, 2009 issue
**Former interior
 design professor
 dies**

By Ron Podell



Virginia North, a former professor, interim department head and program coordinator at Eastern Michigan University from 1978-1999, died Oct. 22 in a car accident. A vehicle on M-14 crossed a median that lacked a guardrail and crashed into her car. She was 58.

North came to EMU as an assistant professor of interior design in 1978 and she quickly became program coordinator.

"She was the core of the interior design program. She was the program at the time she was there," said Louise Jones, an EMU emeritus faculty member who succeeded North as interior design program coordinator.

Deb deLaski-Smith, interim dean of the Graduate School, said "I worked with her for 20 years. When we both came to EMU, there were only three faculty (no adjuncts) teaching in the interior design program. We worked through the first accreditation process in the early 1980s and continued on from there.



North

"The program grew and a graduate program emerged. She was the program coordinator for a very long time and was the conduit with the professional organizations," deLaski-Smith said. "Students won design competitions on an annual basis under her leadership."

For one year, North served as the interim department head for the Department of Human Environment and Consumer Resources. North left EMU in 1999 to become the department head for the interior architecture program in the School of Art and Architecture at Lawrence Technological University.

North received her doctorate in architecture at the University of Michigan and her bachelor's degree in interior design at Michigan State University.

Before coming to EMU, North was a lecturer in interior architecture and environmental psychology at Lawrence Institute of Technology from 1981-1987 and a researcher in The Institute for Social Research at the University of Michigan from 1984-1985.

North received a number of awards, including the American Institute of Architects State Honor Award for the design of the building addition for Pressure Vessel Services; the Interior Design Educators Council National Juried Design Award for the design of Liberty State Bank's Waterford branch; the American Society of Interior Designers (ASID) National Appreciation Award; the ASID Michigan Chapter Presidential Citation.

She was a member of the ASID, where she served on its board of directors, and was its professional development chairperson and publicity chairperson. She was a member of the Institute of Business Designers, and served on its board of directors and was its vice president for education and vice president for communications.

Her hobbies included competitive figure skating, tennis, martial arts, biking and reading.

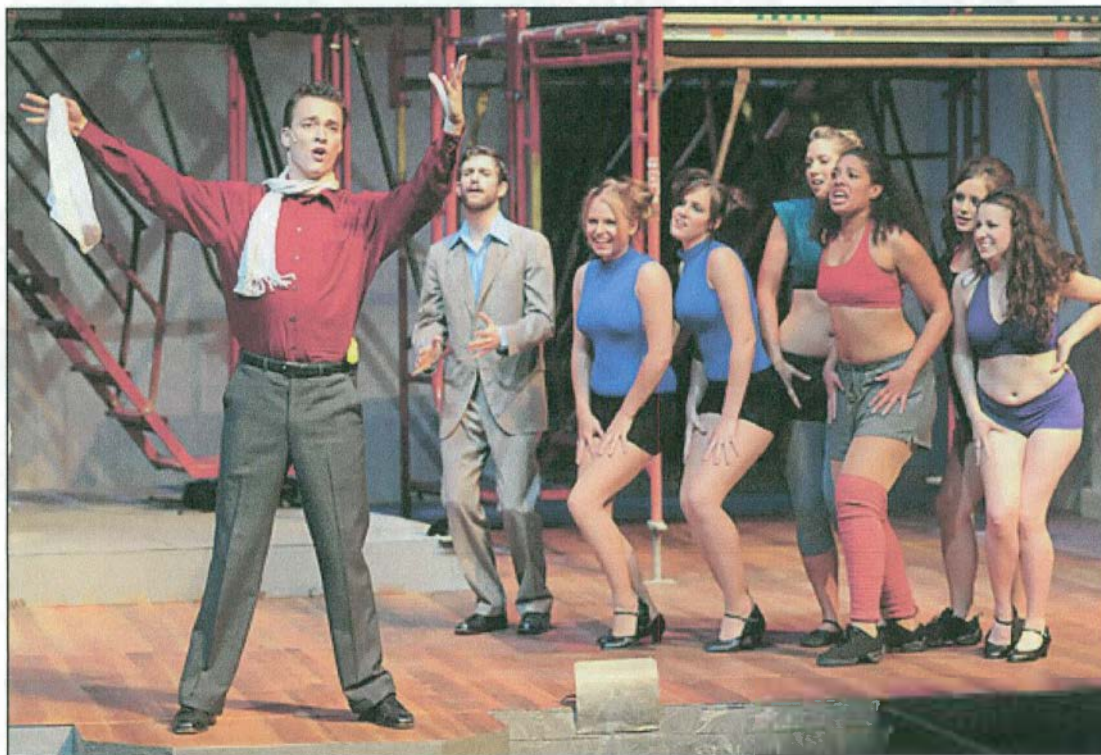
North is survived by her husband, Clare; a daughter, Ashley; a brother, Frank DeGroff; a sister, Marcia North; and a number of nieces and nephews.

A memorial service took place Oct. 27 at First Congregational Church of Ann Arbor.

Featured Photo

FOCUS *EMU*
Online

Oct. 27, 2009 issue



FUNNY STUFF: (from left) Miles Gloriosus, played by Matt Anderson, comes to claim his bride, Philia during a scene from EMU Theatre's production of "A Funny Thing Happened on the Way to the Forum. Gloriosus is greeted by Roman slave Pseudolus, played by Maxim Hunt, and a group of courtesans including Geminae (Sarah Leahy), Geminae (Stacy Brewer), Panacea (Tricia Hill), Gymnasia (Kristal Pouncy), Vibrata (Tiffany Angell) and Tintinabula (Kelley Stonebraker). The farce, inspired by the works of the ancient Roman playwright Plautus (251-183 B.C.) is the raucous, libidinous story of Roman slave Pseudolus, as he tries to win his freedom by helping his master, Hero, find love. The play continues its run Oct. 29-31, 7 p.m., in Quirk Theatre.

FOCUS *EMU*
Online

Featured Photo

FOCUS EMU
Online

Oct. 27, 2009 issue



JAY-Z IN CONCERT: Rapper Jay-Z belts out one of his tunes during a concert in the Convocation Center Oct. 21. Jay-Z performed for 1 1/2 hours and was preceded by the warm-up band N.E.R.D. The concert was a sellout with 6,792 in attendance.

Back to
FOCUS EMU
Online

Featured Photo

FOCUS EMU
Online

Oct. 27, 2009 issue



FINISH THIS STORY: Frances Martin, a volunteer with the nonprofit writing center, 826michigan, hands out a story that needs to be finished as part of National Day on Writing activities that took place on campus Oct. 20. 826michigan is dedicated to supporting students, ages 6-18, with their creative and expository writing skills. Activities included writing marathons, WritingCorps, writing activities, persons acting as roving reporters and opportunities to submit writing samples to the National Gallery. Approximately 1,800 persons participated in the campus event.

Back to
FOCUS EMU
Online

Featured Photo

FOCUS EMU
Online

Oct. 27, 2009 issue



STUDY FUEL: Amanda Luthane (left), an EMU student, fills her plate with food during the late night breakfast kickoff for Club Halle that took place in Halle Library Oct. 18. Club Halle is the 24-hour library initiative that is ongoing during certain times of the academic year. Servers included (from back left) Elizabeth Broughton, faculty athletics representative; Bernice Lindke, vice president for student affairs and enrollment management; and Noah Borton, student organizations and Greek Life coordinator. Photo by Anthony Gattine

Back to
FOCUS EMU
Online

Featured Photo

FOCUS **EMU**
Online

Oct. 27, 2009 issue



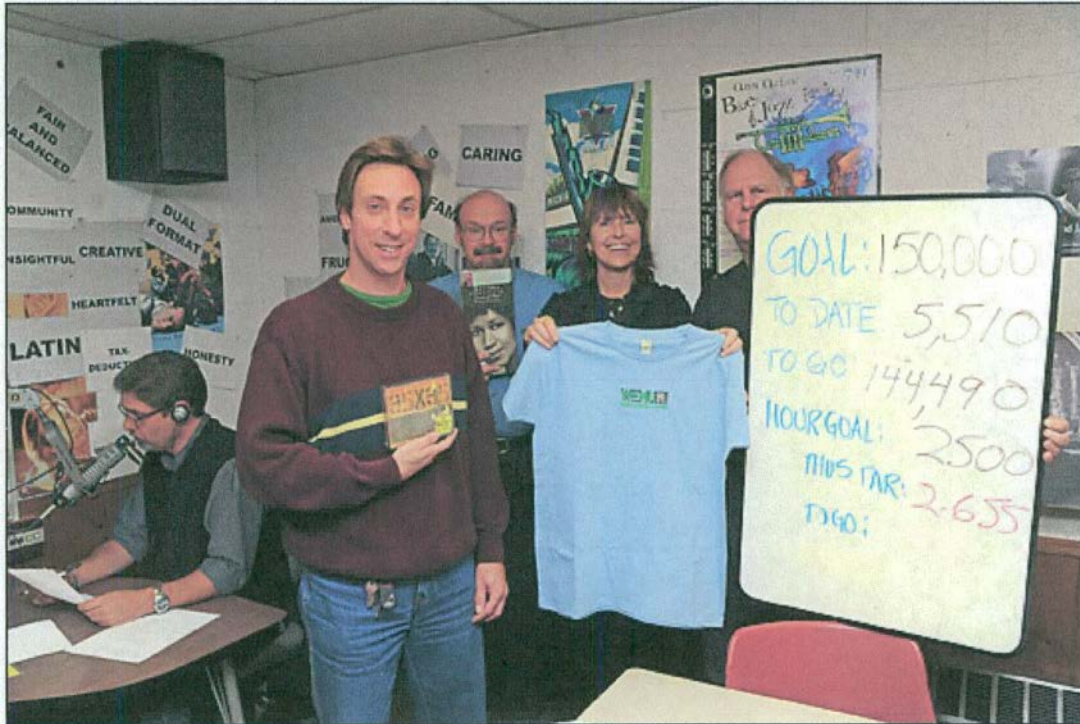
HEAR THE TRUMPET: Sarah Bird, a senior music education major, performs on her trumpet during Band Day at Rynearson Stadium Oct. 17. The Eastern Michigan University Marching Band hosted the event for regional high school bands before the EMU football game against Kent State. Bird is trumpet section leader for the marching band.

Back to
FOCUS **EMU**
Online

Featured Photo

FOCUS *EMU*
Online

Oct. 27, 2009 issue



EARLY TALLY BOARD: WEMU's annual Fall Fund Drive kicked off Oct. 16. David Fair (seated, far left) a WEMU news reporter, was joined by volunteers (standing, from left) Jim Weyman of Ypsilanti; WEMU's Bill Harris, Susan Pollay, executive director of the Ann Arbor Development Authority; and Mike Deren of Ann Arbor. This year's fundraising goal is \$150,000.

Back to
FOCUS *EMU*
Online

Featured Photo

FOCUS **EMU**
Online

Oct. 27, 2009 issue

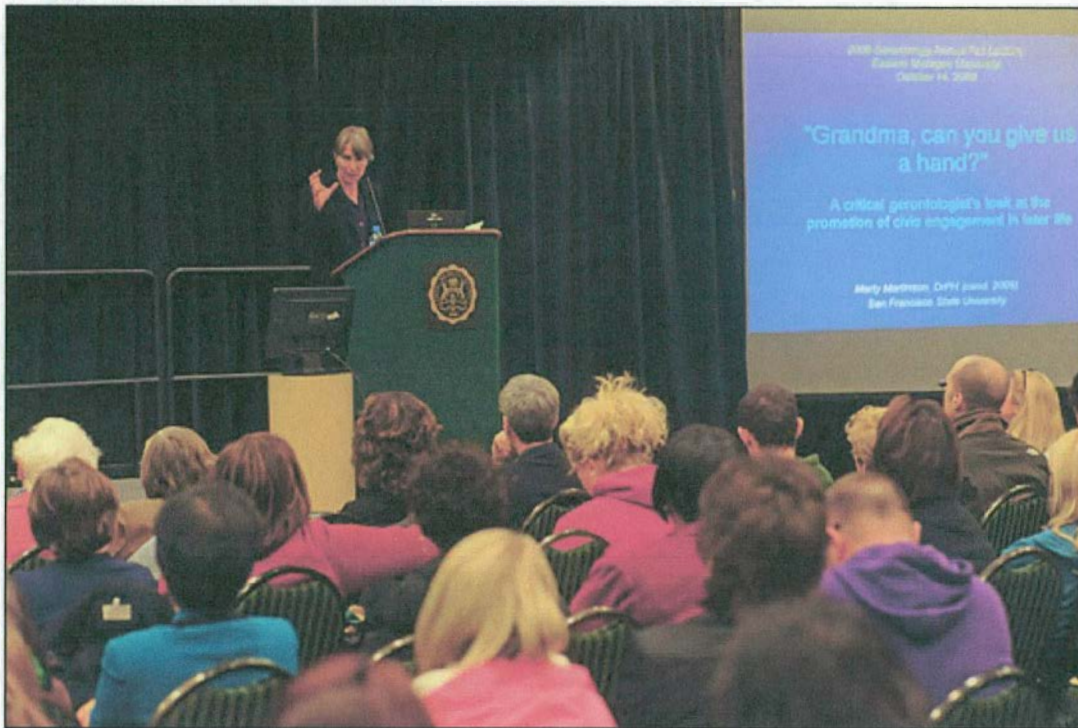


THRILLER MADNESS: A group of Eastern Michigan University women basketball players perform a medley of Michael Jackson songs during the Thriller Madness event at the Convocation Center Oct. 16. The event served as the tip off to the 2009-2010 basketball season for EMU's men's and women's basketball teams, each of which conducted 15-minute scrimmages for approximately 500 fans. In addition to the tribute to the King of Pop, basketball players signed autographs, fans received a behind-the-scenes tour of the Convocation Center and participated in the Eagle Nation 3-Point Challenge. Photo by Anthony Gattine

Featured Photo

FOCUS *EMU*
Online

Oct. 27, 2009 issue



GRANDMA'S HELP: Marty Martinson, a lecturer at San Francisco State University's Department of Health Education, presented "Grandma, can you give us a hand?: A Critical Gerontologist's Look at the Promotion of Civic Engagement in Later Life" Oct. 14 in the Student Center. Martinson was the keynote for the EMU Gerontology Department's Fall Lecture, which has been an annual event for more than 20 years. This year, the lecture also was included as part of the Elder Week Conference.

Back to
FOCUS *EMU*
Online

Featured Photo

FOCUS EMU
Online

Oct. 27, 2009 issue



ON POINT: Suzanne Farrell (front, middle), one of the preminent ballerinas of the 20th century, who studied at George Balanchine's School of American Ballet, recently taught a two-hour dance class at EMU's Warner Gym. Farrell made an appearance during a recent stay in Ann Arbor for a performance of her dance troupe, The Suzanne Farrell Ballet.

Back to
FOCUS EMU
Online

News Briefs

FOCUS^{EMU}
Online

The following are news briefs about important activities and events happening at Eastern Michigan University.

Oct. 27, 2009 issue
News Briefs

By Ron Podell

- A Funny Thing Happened on the Way to the Forum
- Electronic W-2 consent
- EMU Open Enrollment Period and Flexible Spending Account
- EMU Open Enrollment for Short-Term Disability
- Continuing Education scholarships available
- Contemporary Art Exhibition continues
- Student Center parking lot closed
- Native American Fall Feast
- Special benefits from Chase
- AQIP Action Projects sought

- **A Funny Thing Happened on the Way to the Forum:** The EMU Theatre season kicks off with Stephen Sondheim's Tony Award-winning musical, "A Funny Thing Happened on the Way to the Forum," Oct. 29-31, 7 p.m., Quirk Theatre. Pirooz Aghssa directs this farce, inspired by the works of the ancient Roman playwright Plautus (251-183 B.C.) and accounts the raucous, libidinous story of Roman slave Pseudolus, as he tries to win his freedom by helping his master, Hero, find love. Appropriate for ages 12 and up. For tickets, call 487-2282 or you can purchase them at the Convocation Center, Student Center ticket office or the Quirk Box Office.



- **Electronic W-2 consent:** In its continuing effort to GO GREEN, Payroll is now offering employees the opportunity to receive their W-2 electronically instead of being printed and mailed. Employees can consent to receive their electronic W-2 in Employee Self Service (ESS). For more information, go to: <http://www.emich.edu/finserv/payroll/index.html> or contact Payroll at 487-2393.
- **EMU Open Enrollment period and Flexible Spending Account:** Eastern Michigan University's Open Enrollment period is scheduled through Friday, Oct. 30. The "Health Care Options" booklet will be mailed to every benefits-eligible employee's department. This booklet will provide specific information on each of the available health plans. The effective date of any coverage change will be Jan. 1, 2010. For questions, please contact the Benefits Office at 487-3195. Flexible Spending Account (FSA) Open Enrollment is scheduled Oct. 19-30. If you wish to have an FSA for calendar year 2010, you must enroll during this time. FSAs for 2009 will end Dec. 31, 2009. For enrollment information, please contact the Benefits Office at 487-3195.
- **EMU Open Enrollment for Short-Term Disability:** The Open Enrollment Period for the Short-Term Disability benefit for CS employees is scheduled through Friday, Oct. 30. During this time, clerical/secretarial employees who did not enroll in the Short-Term Disability benefit when initially offered will have the opportunity to enroll, with coverage becoming effective Jan. 1, 2010. Any enrollments will require a Statement of Health to be completed. CS employees who are interested in this benefit must complete an enrollment application and a Statement of Health. These must be turned in by Oct. 30. There is a cost to the benefit of \$7.58 per month. CS employees currently enrolled in the plan need to do nothing. This benefit is administered by MetLife, which offers

Back to Current Issue
FOCUS^{EMU}
Online

a dedicated customer response center; a toll free number to initiate claims (1-800-858-6506); seamless transition from Short-Term Disability to Long-Term Disability. Any questions can be directed to either Karyn Jones or the Benefits Office at 487-3195.

- **Continuing Education scholarships available:** Five scholarships are available for students studying through Continuing Education. Undergraduate and graduate students enrolled in any of the programs offered through Continuing Education during the winter or spring 2010 terms are eligible. The application deadline is Nov. 1, 2009. An online application form is available at ep.emich.edu/scholarships



A WOMAN AND HER DOG: "Ellen and Nellie," an oil on panel painting by artist Joseph Begnaud, is part of the Contemporary Art exhibit on display in Ford Gallery.

Contemporary Art exhibit continues:

"Contemporary Art," an invitational survey of contemporary painting, features the work of artists from across the nation working in a variety of paint media and approaches, continues through Thursday, Nov. 5, in Ford Gallery. Curated by EMU faculty Michael Reedy and Amy

Sacksteder, the exhibit features the work of local, regional and national artists. The exhibition investigates the role of painting in today's art world with no restrictions on scale, media, and subject matter. For more information, call 487-0465 or e-mail Jennifer Locke at jllocke1@emich.edu

- **Student Center parking lot closed:** The Student Center parking lot A1 will be partially closed through Monday, Nov. 2, for a roofing project scheduled at Hill and Pittman Halls. Alternative parking is available in Green Lot 1 and 2. For questions, contact Travis Temeyer, physical plant, 487-3380.
- **Native American Fall Feast:** Usher in this time of harvest and celebration during the Native American Fall Feast Monday, Nov. 2, 6 p.m., room 310 A/B, Student Center. Blue Lake will be the featured drumming circle. There will be free food sponsored by Student Government. Canned goods will be collected during the event to be donated to local food banks in the area. The event is organized by the Native American Student Organization, The Center for Multicultural Affairs and Diversity and Community Involvement. For more information, contact the CMA, 487-2377, by e-mail at cma.dci@emich.edu or go to www.emich.edu/cma.
- **Special benefits from Chase:** Eastern Michigan University staff and faculty members will be able to receive better rates, more rewards and bigger discounts in one convenient banking package by becoming a JP Morgan Chase customer. Representatives from Chase Bank will be located in front of the EMU bookstore in the Student Center from 10 a.m. to 3 p.m. Tuesday, Oct. 27, and Wednesday, Oct. 28. Please stop by to find out how you can take advantage of these special features. For more information, call Benefits, 487-3195.

- **AQIP Action Projects**



sought:

EMU's

Continuous Improvement Operations Council (CIOC) requests proposals for AQIP Action Projects to be implemented in January 2010 and beyond. The CIOC will review proposals at its December 2009 meeting. Any member of the EMU community (student, faculty, staff, or administrator) can propose an Action Project. Action Projects are concrete, specific continuous improvement projects that address an EMU area of functioning that can be improved. The project should identify evidence supporting need for improvement. Ideally, an Action Project will document measurable improvement over a period of six months to three years. Additional information can be found at <http://www.emich.edu/aqip/index.html>, and the application form can be found at <http://www.emich.edu/aqip/actionproject1.html>. Proposals are evaluated on clarity of the problem definition, relationship to one or more AQIP categories, feasibility of implementation within a relatively short time, consistency with the EMU mission, level of collaboration in the implementation plan, and clarity of criteria for success. For more information, please contact Jeanne Thomas at 487-7120, extension 2742; or e-mail jeanne.thomas@emich.edu.

Why I teach at Eastern Michigan University

FOCUS *EMU*
Online

Oct. 27, 2009 issue



After completing the University of Michigan's second-career bachelor's degree program in nursing, I began the University of Michigan's graduate nursing program. I also had been teaching nursing and pre-nursing classes at Washtenaw Community College and Monroe Community College. I loved teaching, so I kept wondering when I would be able to take a class in nursing education.

A flier about Eastern Michigan University's educational certification in nursing piqued my interest, so I made the switch. Eastern Michigan's program had the same focus that I had always had in my head — that the education of nurses needs to be serious and prepare them for the real world of nursing.

I try to get my students excited about a career in nursing because things are always changing. They've picked a profession that's an art as well as a science. They have to learn to connect with patients, interact with them and learn how to help them. They'll never be the best because they're always improving; always learning from faculty, students and patients. That's what is wonderful about a career in nursing.

I believe in the power of kindness, so I challenge my students with kindness to become the best nurses they can be. To help them get a job after graduation, I developed a special assignment in the clinical course based on an article I read in a nursing journal. The assignment focuses on critical job skills such as prioritizing and taking initiative. It's a marketing tool that puts EMU graduates a step above others at a job interview.

I partner with my students to help them learn. Sometimes, they complain about all the work. But many former students thank me for getting them ready for their role as a nurse. A recent graduate, who is now an Air Force flight nurse, said he felt better prepared than his new nursing hire counterparts. My goal is to do whatever I can to

