

Cover Story

FOCUS EMU
Online

Jan. 12, 2010 issue

EMU's MLK Jr. Celebration encourages everyone to keep the dream alive

By Lisa Donovan

Back to Current Issue
FOCUS EMU
Online

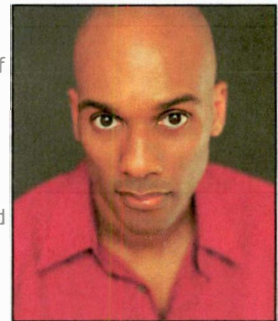
Martin Luther King Jr. had a dream of equality for all people. And while the struggle continues more than four decades later, this year's annual celebration of the slain civil rights leader at Eastern Michigan University puts the onus on each individual to do their part to move that dream forward.

"The Dream: [Insert Self Here]," is the theme of this year's Martin Luther King Jr. Celebration, scheduled Jan. 15-19 on campus. The theme was chosen to encourage people to reflect on King's dream, life and legacy and think about how they can continue his work.

"We want people to be motivated into action — less talk, more action," said Kay Woodiel, co-chair of EMU's Martin Luther King, Jr. Day Committee and EMU's director of diversity and community involvement. "Progress has been made toward Dr. King's dream, but we know we still have work to do. It will require all of us, so insert yourself into the dream and get to work!"

In a longstanding annual tradition, EMU will celebrate King's life through special opportunities for learning, discussion, creative expression and community building.

Martin Luther King, Jr. Day is filled with activities, beginning with a **special breakfast** Monday, Jan. 18, 7:45-9:30 a.m., in room 310 of the Student Center. After breakfast, **Keith Boykin** will present the keynote address, "Reaching Dr. King's Dream in the Obama Era", at 10 a.m. in the Student Center Auditorium. Boykin is the editor of The Daily Voice online news site, a CNBC contributor, a BET TV host and a New York Times best-selling author of three books. Boykin has been actively involved in progressive causes since he worked on his first congressional campaign in high school. He is a veteran of six political campaigns and was named **Boykin** one of the top instructors when he taught political science at American University in Washington, D.C.



PRESIDENT'S LUNCHEON: The President's Luncheon for EMU's MLK Jr. Day Celebration is scheduled Monday, Jan. 18, 11:45 a.m., in the Student Center Ballroom (pictured above).

the U.S. House of Representatives.

Following Boykin's address, the **President's Luncheon** will take place at 11:45 a.m. in the Student Center Ballroom. House Majority Whip James E. Clyburn (D - South Carolina) will provide brief remarks. Clyburn has served in the U.S. House of Representatives since 1993 and became House Majority Whip in November 2006. He is the first South Carolinian and the second African American to ascend to the third-ranking position in

Clyburn was elected president of his NAACP youth chapter when he was 12 years old, participated in many marches and demonstrations, and was chosen as the star witness in a 1960 Orangeburg, S.C. civil disobedience case defended by civil rights activist and attorney Matthew Perry. That case developed from the arrest of 388 college students — two of whom were Clyburn and his future wife, Emily England of Moncks Corner, South Carolina, whom he met during that incarceration. He was later jailed during a 1961 march on the South Carolina State Capitol in Columbia that resulted in the landmark breach of the peace case, *Edwards vs. South Carolina*.

A highlight of this luncheon event is the presentation of the **Martin Luther King, Jr. Humanitarian Awards**, which recognize individuals from within the university and the local community who exemplify King's values and ideals. Tickets are \$19 for faculty and staff, \$9 for students, and are available at the Convocation Center, Quirk Theatre and the Student Center. For tickets, call 487-2282.

During the afternoon, students will have the opportunity to participate in numerous academic sessions, offered in two time periods, 2-2:50 p.m. and 3-3:50 p.m., in various rooms in the Student Center. Sessions range from an interactive discussion on **"Racialized Role Strain in the Academy: Tensions, Tribulations, Triumphs,"** to **"Stereotypes and Film,"** an analysis of the portrayal of minorities in films. Many of these sessions qualify for Learning Beyond the Classroom credit.

A variety of activities will round out the day. EMU's **CloseUP Theatre Troupe** will present two performances, 4-4:45 p.m. and 6-6:45 p.m., in the Student Center Auditorium. The Alpha Phi Alpha Inc. fraternity, of which King was a member, is sponsoring a candlelight **Alpha March** from the Student Center to the MLK bust and back, 5-5:30 p.m. The day culminates with an **Afterglow**



UP CLOSE: As part of MLK Jr. Day Celebration activities, Eastern Michigan University's CloseUP Theatre Troupe will present two performances in the Student Center Auditorium.

event from 5:30-7:30 p.m., in the Student Center. The gathering is a way to celebrate the success of the day and reflect on its purpose.

A list of other 2010 Martin Luther King, Jr. Celebration events are as follows:

A **Student Video Competition** is a new event this year. Interested students are encouraged to create a two-minute video reflecting how King has impacted their life and what this year's theme means to them. Approved videos will be linked to www.emich.edu/mlk for viewing and voting by students, faculty, staff and alumni. The winning entrant will receive a \$500 scholarship and have their video showcased at the President's Luncheon Jan. 18. For more information on the competition, visit www.emich.edu/mlk/video.html.

"Color of Drums" will kick off this year's celebration, Friday, Jan. 15, 7:30 p.m., in Pease Auditorium. This event, hosted by the Poetry Society, commemorates King's life through song, dance and spoken word.

Night owls can complete the night with a **Lock-in**, scheduled 10 p.m. to 2

a.m., in the Rec/IM.

Students can put their talent to the test at the **Hip Hop Explosion**, Saturday, Jan. 16, 7 p.m., in Pease Auditorium. This competition will feature performances that reflect King's values and spirit. Winners will receive free cell phones and T-shirts. Others will have a chance to win free haircuts and hip hop apparel.



Gragg

Learn about the challenges faced by African Americans in the field of sports management at a panel discussion, **"From the Playing Field to the Front Office,"** Sunday, 7 p.m., Jan. 17, in the Student Center Auditorium. Derrick Gragg, EMU's athletics director; Stephannnie Vandenberg, associate athletic director/senior women's administrator; Head Baseball Coach Jay Alexander and Head Women's Basketball Coach AnnMarie Gilbert will share their experiences as they advanced to head coaching and key administrative positions in Division I athletic programs.

The 2010 Martin Luther King, Jr. Celebration will conclude with a **Book and Film** event, Tuesday, Jan. 19, 6 p.m., in the Student Center Auditorium. This event will feature the book, "Warriors Don't Cry", by Melba Pattillo Beals and the movie "Prom Night in Mississippi."

For more information on the 2010 Martin Luther King, Jr. Day Celebration, visit www.emich.edu/mlk/. — *Ward Mullens contributed to this report.*

Feature

FOCUS^{EMU}
Online

Jan. 12, 2010 issue
**EMU one of six
 Michigan
 universities selected
 for \$16.7 million
 W.K. Kellogg
 Foundation
 fellowship to
 prepare new math,
 science teachers**

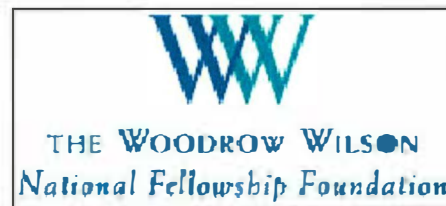
By Pamela Young



Eastern Michigan University, known for its 160-year history of teacher education, will participate in a new fellowship program designed to prepare teachers in science, technology, engineering and math (STEM).

The W.K. Kellogg Foundation's Woodrow Wilson Michigan Teaching Fellowship has awarded a \$16.7 million grant to six Michigan public universities and five school districts for training 240 new math and science teachers to work in selected middle and high schools. In addition to Eastern Michigan, the universities are the University of Michigan, Michigan State University, Western Michigan University, Grand Valley State University and Wayne State University. The five school districts are the Detroit Public Schools, Battle Creek Public Schools, Kalamazoo Public Schools, Benton Harbor Area Schools and Grand Rapids Public Schools.

Michigan Gov. Jennifer Granholm announced the fellowship grant Jan. 7 in Lansing. Michigan is one of only three states, along with Indiana and Ohio, chosen for this program. The W.K. Kellogg Foundation-funded fellowship program provides promising future teachers with an exemplary master's degree in education, and places those fellows in hard-to-staff middle and high schools for a minimum of three years. Candidates will range from college seniors and recent graduates to those who have changed careers or veteran educators.



STEM FELLOWSHIP: The W.K. Kellogg Foundation's Woodrow Wilson Michigan Teaching Fellowship has awarded a \$16.7 million grant to six Michigan public universities, including EMU, and five school districts for training 240 new math and science teachers to work in selected middle and high schools.

Granholm said Jan. 7 that Michigan has phenomenal universities.

"That's why the news of our state being chosen for this program is so exciting," she said in a statement. "The state desperately needs teachers in the areas of math and science. Over a period of five years, nearly 20,000 Michigan public school students will receive a high-quality education in science, technology, engineering and math from these new teachers."

Factors considered as part of the process of selecting the universities included a commitment to the goals and standards of the fellowship; the capacity to establish a world-class math and science teacher education program; and existing relationships between the universities and surrounding urban or rural school districts. Eastern's strengths included:

- Its teacher preparation programs, which are rated as "exemplary" by the Michigan Department of Education.
- Eastern Michigan is one of the largest providers of teachers in the country. One out of every four teachers in Michigan has at least one degree from Eastern and 1 percent of the national teacher workforce has a degree from Eastern.
- Depending on the discipline, between 90 and 100 percent of Eastern students pass the state certification subject matter test on their first

try.

- Eastern has a long history of cooperation between its college of arts and sciences and its college of education in planning special programs to train teachers. That is particularly relevant for a program offering training in STEM areas. Examples of this joint effort include development of the Masters of Arts in Teaching program in mathematics and development of a new elementary education program.
- The University has a solid track record of preparing and placing students of color in teaching positions. The Michigan Department of Education has given EMU the highest rating in the "diversity" category.
- Fourteen percent of Eastern's teacher education graduates are minorities, making EMU second only to Wayne State within the state of Michigan.
- Eastern has partnership agreements that offer intensive mentoring for its graduates with six area school systems. They are Ann Arbor, Lincoln, Inkster, Wayne-Westland, Willow Run and Ypsilanti.

As part of a Jan. 6 White House event celebrating the importance of teachers in the four STEM areas, President Barack Obama called the fellowship "a model effort to inspire students to excel in math and science."

He also cited the Michigan Teaching Fellowship as one of the new partners in the president's "Educate to Innovate" campaign. The campaign is part of his efforts to lift American students to the "top of the pack" in science and math achievement during the next decade. The campaign was launched in November 2009.

Feature

FOCUS EMU
Online

Jan 12, 2010 issue

**EMU names Carl
Powell chief
information officer**

By Walter Kraft

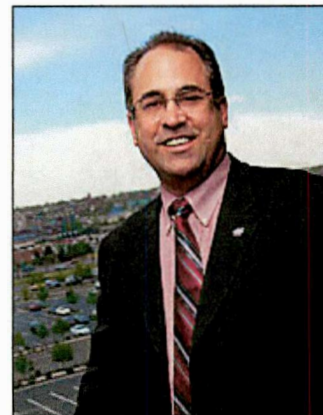
Back to Current Issue
FOCUS EMU
Online

Eastern Michigan University has named Carl Powell as its new chief information officer, pending approval by the Board of Regents. The appointment is effective Feb. 8, 2010.

Powell joins Eastern from Metropolitan State College of Denver, where he was vice president and chief information officer. He has more than 25 years experience in information technology management and higher education.

"Providing direction and strategic vision to our extensive Information technology infrastructure is a key element of our future initiatives," said EMU President Susan Martin. "Carl brings a broad range of information technology and leadership experience, and we welcome him to Eastern."

Prior to Metropolitan State College of Denver, Powell's previous positions include: senior technology consultant at Cynergies Solutions Group in Highland Heights, Ohio; vice president and chief information officer at Cuyahoga Community College District in Cleveland, Ohio; adjunct faculty, College of Education, Cleveland State University; manager of I/S development, Corporate Systems, The Progressive Corporation; manager of I/S development, Financial Systems, Medical Mutual of Ohio; vice president and department manager, Key Bank; and, manager of I/T Services, IBM Corporation.

**Powell**

"As a Midwesterner, I'm well aware of the strong regional reputation of Eastern Michigan University and am pleased to become part of the team," said Powell. "This is an excellent opportunity to build on an already strong information technology division."

Powell received his doctorate in education from Cleveland State University, a master's degree in computer science from Kent State University, and his bachelor's degree, with honors, from the University of California at Santa Barbara.

Powell and his wife currently live in Lakewood, Colorado. They have one daughter. His salary will be \$162,000.

Feature

FOCUS EMU *Online*

Jan. 12, 2010 issue
EMU reaches out to help its alumni teachers and their students with "EMU Education First Stimulus" package

By Geoff Larcom



With school budget cuts putting a dent in the classroom experience, Eastern Michigan University is reaching out to help its teaching alumni by offering free classroom supplies and other benefits through a special program this winter.

The "EMU Education First Stimulus" package seeks to give Eastern's hard-working education alumni help where they need it most — in the classroom. The University sent a letter to its 13,000 education alumni members this month, urging teachers to enter a drawing for a year's worth of school supplies, or indicate an interest in other available, useful items.

There is no cost to participate. Teachers can simply send an e-mail before Jan. 15 to education.stimulus@emich.edu and indicate their interest in receiving any or all of the following benefits:

- Entry into a random drawing for one year's worth of school supplies, such as paper, pencils and the like (a \$1,000 value) delivered directly to the teacher in their classroom.
- EMU-branded pencils, pennants and/or posters.
- EMU-branded hand sanitizers, at one per request for the first 1,000 who respond.
- An EMU Eagle Discount Program alumni card to receive discounts at more than 125 Ypsilanti-area businesses. Visit emich.edu/eaglediscount.

"We appreciate all that our education alumni do to help educate tomorrow's leaders, and understand the hardships imposed by tightening budgets," said Ted Coutilish, EMU's associate vice president for marketing. "We wanted to help, so we created the 'EMU Education First Stimulus' package."

Education alumni also were encouraged to take advantage of practical educational content, tips, podcasts and videos available on two EMU-media partnership programs for teachers, parents and their children. Those are WWJ Radio's (950 AM) "Education Minute," at wwj.com/pages/1924535.php and WXYZ TV's (Channel 7) "Spotlight on Education" at wxyz.com/education.

Feature

FOCUS^{EMU}
Online

Jan. 12, 2010 issue
**EMU Regents
 approve 11 new
 staff hires**

By Ron Podell

Back to Current Issue
FOCUS^{EMU}
Online

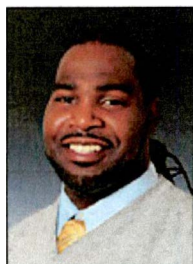
The Eastern Michigan University Board of Regents approved the appointments of 11 new staff at its regular meeting Dec. 17.

Of the 11 appointments, four (36 percent) are female and seven (64 percent) are males. The group includes six Caucasians (55 percent), two African-Americans (18 percent), one Hispanic (9 percent), one Native American (9 percent) and one Asian (9 percent).

Those receiving appointments are:

Robert Zellers, of Muncie, Ind., associate director, financial aid. Before coming to Eastern Michigan University, Zellers was director of scholarships and financial aid for Ball State University from 2000-2009. Before that, he was director of financial aid services for Indiana University-Purdue University-Fort Wayne from 1995-2000. Zellers received his doctorate in educational leadership from Western Michigan University; an educational specialist's degree in student personnel services from the University of Toledo; and both his master's degree in counseling and a bachelor's degree in secondary education from Indiana University.

Brian McElhone, of Taylor, HVAC control specialist, physical plant. Previously, McElhone was a commercial service technician with Facility Resource Group in Grandville, Mich., from 2008-2009, and an HVAC/refrigeration service technician for Sears in Livonia from 2006-2008.

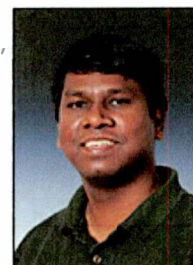


Caleb Boswell, of Southfield, site coordinator, Institute for the Study of Children and Families. Before coming to Eastern Michigan University, Boswell was an academic adviser at Weston Preparatory Academy from 2008-2009. Prior to that, he was an academic adviser for the Upward Bound Program at Detroit International Academy and Frederick Douglass Academy from 2006-2008. Boswell received his bachelor's degree in psychology and interpersonal and public communications from Central Michigan University.

Boswell

Tiffany Godsey, of Ypsilanti, emergency management coordinator, health safety administration. Previously, Godsey was a policy analyst with the Michigan State Police in Lansing from 2008-2009 and a student office assistant with the Michigan State University Criminal Justice Outreach from 2006-2008. Godsey received her master's degree in criminal justice from Michigan State University and her bachelor's degree in law enforcement concentration from Eastern Michigan University.

Alexander Samuel, of Belleville, database specialist, DoIT-enterprise applications and services. Most recently, Samuel was IT project lead for Society of Manufacturing Engineers (SME) in Dearborn Heights from 2008-2009. Before that, he was senior consultant with CAPGEMINI USA (Visteon Corp. since 2005) from 2000-2008. Samuel received his bachelor's degree in computer science and engineering from Omania University in Hyderabad, India.



Samuel

Others receiving appointments are:

Alejandro Baldwin, of Ypsilanti, mentoring program specialist, Institute for the Study of Children and Families.

Julia Hutchins, of Ann Arbor, academic support program specialist,
Upward Bound Program

Christine Kropelnycky, of Warren, administrative assistant I, health
safety administration.

Nina Jones, of Ypsilanti, cook, dining services.

Clifford Quiel, of Taylor, cook, dining services.

Anthony Doulas, of Onsted, fast food worker, dining services.

Feature

FOCUS^{EMU}
Online

Jan. 12, 2010 issue

**EMU Regents
approve one
administrative
professional
appointment**

By Ron Podell

[Back to Current Issue](#)
FOCUS^{EMU}
Online

The Eastern Michigan University Board of Regents approved one administrative professional appointment at its regular meeting Dec. 17.

The administrative appointment is:

Muralidharan Nair, of Ypsilanti, was named interim dean of the College of Health and Human Services, effective Sept. 1, 2009. Nair came to EMU in 2000 as an associate professor in the then-department of health, physical education, recreation and dance. He served as the interim associate dean in the College of Health and Human Services during 2008; the director of the School of Health Promotion and Human Performance in 2006; and interim director of the School of Health Promotion and Human Performance in 2005.

**Nair**

Nair received his doctorate in motor learning from the University of Virginia; and both his master's degree in physical education and his bachelor's degree in geography from the University of Malaya Kuala Lumpur in Malaysia.

Feature

FOCUS EMU
Online

Jan. 12, 2010 issue
**EMU Regents grant
 emeritus status to
 six faculty, one staff
 member**

By Pamela Young



The Eastern Michigan University Board of Regents granted emeritus status to six faculty and one staff member at its regular meeting Dec. 17.

Faculty and staff may be nominated for emeritus status upon retirement if they have at least 15 years of service. Those granted emeritus status are:

Catherine Bach of Ann Arbor, professor, biology, who retired Jan. 2, after 18 years of service. Bach has mentored numerous graduate and undergraduate students in the practice of science. She is an internationally known researcher in plant-insect interactions and has served as an editor for the journal *Ecology*, the top journal in her field. Bach won the Outstanding Adviser Award in 2000.



EMERITUS GRANTED: Catherine Bach, a retired professor of biology, was granted emeritus status at the recent Board of Regents meeting. Bach is flanked by EMU Regent Thomas Sidlik (left) and Provost Jack Kay (right).

Paul Kuwik of Ypsilanti, professor, technology studies. Kuwik retired Aug. 31, 2009, after 39 years of service. During his tenure, he served as a department head and helped develop the Coatings and Research Institute. The Institute is home to the College of Technology's Polymers and Coatings Program, one of only four such programs in the country.

Margaret Moore-Hart of Brighton, professor, teacher education. Moore-Hart retired Jan. 4 after 21 years of service. She has served on numerous committees at EMU and was chair of the College of Education Council for three years. Moore-Hart has published numerous articles and a recently released book on how to teach writing in diverse classrooms.



WELCOME: Walter Moss (center), a retired EMU professor of history and philosophy, recently received emeritus status. Moss is pictured with EMU Regent Thomas Sidlik (left) and Provost Jack Kay.

Walter Moss of Ypsilanti, history and philosophy, who retired Jan. 5 after 39 years of service. He was nominated for his nearly 40 years as a model teacher of history, for his scholarship and collegiality. He has taught a number of history classes, including "Russia to 1855," "Russia since 1855" and "20th Century Russia." Moss also has written for the *Michigan War Studies Review*.

Donald Pearson, professor, economics, who retired Jan. 4 after 41 years of service. During his tenure, he served as head of the Labor Studies

Program and, more recently, served as director of the undergraduate economics program. He is known for his expertise in unionization, collective bargaining and comparative labor movements.

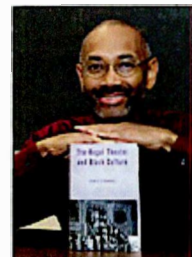
John Robert Smith of Ypsilanti, assistant professor, music and dance, who retired Aug. 31, 2009, after 40 years of service. Known as an all-around musician, Smith primarily taught studio tuba, euphonium and trombone, Music 100 music theory for non-majors, as well as other courses. He has played with the Dodworth Saxhorn Band, including twice at the White House; produced numerous recordings with the group, and appeared as a vocalist with the Ann Arbor Choral Union and the Great Lakes Chorus.

Mary Jane Callison of Ypsilanti, senior secretary, physics and astronomy, who retired Dec. 1, 2009, after 23 years of service. In her role as senior secretary, Callison took beginning physics courses in order to communicate more effectively with faculty and students. She was cited for her loyalty, honesty and integrity, and for making the department office more efficient.

In other business, the board approved the retirements of two faculty members and four staff. They are:

Jeanne Pietig of Ann Arbor, professor, teacher education, who retired Jan. 3, 2009, after 21 years of service. She taught in the area of social foundations of education and supervised student teachers.

Clovis Semmes of Ypsilanti, professor, African American Studies, who retired Sept. 1, 2009, after 21 years of service. In 2008, he received EMU's Alumni Distinguished Teaching Award. He is the author of four books and numerous journal articles.



Karen Simpkins of Ypsilanti, chief human resource officer, who retired Oct. 15, 2009, after more than 33 years of service.

Mary Milliken of Pinckney, senior evaluator/recorder, who retired Sept. 26, 2009, after more than 28 years of service

Semmes

Dana Priess of Wayne, custodian, who retired Oct. 31, 2009, after more than 29 years of service.

Patricia Sullivan of Canton, administrative assistant II, who retired Oct. 2, 2009, after 16 years of service.

Feature

FOCUS EMU
Online

Jan. 12, 2010 issue
**Winter art schedule
 includes creations
 from all ages**

By Lisa Donovan

Back to Current Issue
FOCUS EMU
 Online

This semester's art exhibits in the Ford and University galleries will highlight the work of artists from many age groups. Pre-school children will have a chance to show off their budding talent. Eastern Michigan University students will display works that reflect their growth as artists. And faculty members and other professional artists will share the results of decades of artistic exploration.

"We hope we can broaden awareness about the arts in general, but we also want to draw attention to amazing artists like 85-year-old Charles McGee," said Jennifer Locke, assistant professor of art and interim director of gallery programs.

To select the exhibits, Locke and the Arts and Exhibition Committee sifted through hundreds of proposals from EMU faculty and artists from all over the country. Their criteria included high quality work with a cohesive message.

"We wanted to reflect contemporary art, art history and create a good learning environment for students and the outside community," said Locke. "We also reserve a lot of space in each gallery to showcase the work of EMU students."

A schedule of winter 2010 art gallery exhibitions and lectures is as follows:

The semester begins with an extension of the popular exhibit "**Energy: Charles McGee at Eighty-Five**," through Jan 23, in University Gallery. McGee is one of the most important Michigan artists of the last century. His work artistically addresses our environmental crisis and calls for respect among all ethnic, racial and religious groups. McGee has won numerous awards, including the 2008 Kresge Foundation Detroit Eminent Artist Award, the 1989 Michigan Artist of the Year Award and the 1978 Governor's Michigan Artist Award.

The watercolor, acrylic and pastel media paintings of EMU alumna **Electra Stamelos** is on display through Feb. 26 in Ford Gallery. Her 30 years of work often features landscape imagery, botanical forms and still-life objects. Stamelos' paintings evolved from photographic collages that she created from photos taken during her world travels. She has received numerous awards and recognition for her paintings and drawings. A reception took place Jan. 11.



ALUMNA ART: This watercolor creation, "**Star Cabbage**," was created by **Electra Stamelos**, an EMU alumna. Her watercolor, acrylic and pastel media paintings are on display in Ford Gallery through Feb. 26.

Full and adjunct faculty members will have an opportunity to display their work at the **Annual Art Faculty Exhibition**, scheduled Feb. 1 through March 12, in University Gallery. Photography, painting, watercolor, printmaking, ceramics, drawing, graphic design, sculpture, fibers, metalsmithing, video and mixed media will all be represented.

Nationally known art educator **Sydney Walker** will present a workshop and lecture on campus in February. With the assistance of Beth Ament, an EMU professor of art, Walker will facilitate a workshop for area art teachers and visual arts education undergraduate and graduate students Feb. 15, from 8:30 a.m. to 2 p.m., in room 310 of the Student Center. The workshop will focus on using big ideas to develop art curriculum for K-12 students. Teachers and students may register for this workshop by e-mailing elizabeth.ament@emich.edu. Please put "Walker Workshop_Feb15" in the subject line.

Walker also will present an art lecture, "**Art Making and Meaning Making: Practices of Play**," Feb. 16, 6 p.m., room 300, Student Center Room. Walker is a professor in the department of art education at Ohio State University, where she teaches graduate and undergraduate courses related to artistic practice and contemporary theory. She is the author of "Teaching Meaning in Art Making", and is currently working on a new publication, "Art Making and Meaning Making: Practices of Play."

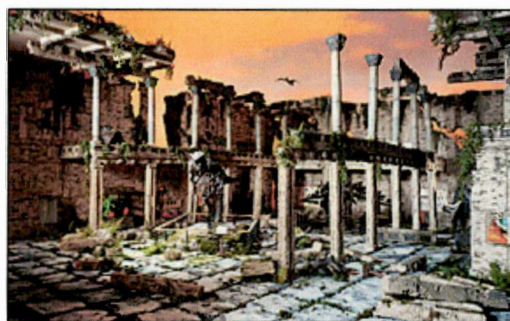
Marcella Carla Sirhandi will present a lecture on the social and political themes and other controversies in Neo Miniature painting in 21st-century Pakistan Tuesday, Feb 16, 12:30 p.m., room 320, Student Center. Sirhandi has a doctorate in art history from Ohio State, a master's degree in art history from California State University-Fresno, and a bachelor's degree in art from California State University-Turlock. She has been a professor of art at Oklahoma State University, Kansas City Art Institute and the University of Oregon.



POLITICAL ART: This Neo Miniature painting, "War Games," was created by artist Marcella Sirhandi. She will present an art lecture Feb. 16 in the Student Center.

The **Graduate Student Art Exhibition** will take place March 8-26 in Ford Gallery. This exhibition showcases the work of the art department's graduate students, utilizing numerous media and subject matter. All graduate student art is eligible for the Graduate School's Artistic Excellence Awards.

Eastern Michigan's best undergraduate art students will be featured in the **Student Art Exhibition**, March 15-April 2, in University Gallery. This juried exhibition showcases student talent in many artistic disciplines, including photography, painting, ceramics, watercolor, printmaking, drawing, graphic design, sculpture, fibers, metalsmithing, video and mixed media.



COLORFUL DECAY: This altered photo is one of a collection dubbed "The City" by photographer Lori Nix. The collection depicts post-apocalyptic urban spaces. Nix presents a lecture March 16 in the Student Center.

Photographer **Lori Nix** will present a lecture March 16, 6 p.m., in room 310A of the Student Center. Nix is best known for photographing carefully constructed sets in ways that blur the lines between truth, memory and fiction. Nix's work has been shown extensively internationally and she has had solo exhibitions at NAB Gallery in Chicago, the Jenkins Johnson Gallery in New York and the Stephen Cohen Gallery in Los Angeles.

The richly varied work of art majors graduating during the 2009-2010 academic year will be displayed at the **Senior BFA Exhibition**, March 29 through April 9, in Ford Gallery. The exhibition is the culminating experience for students pursuing a degree in art or art education.

The talent of honors students and scholarship recipients from the art department will be on view at the **Art Department Honors Exhibition**, April 12-22, in Ford Gallery. Awards will be announced during a reception April 12.

The role of the book in the contemporary art world will be investigated in **"Open Book: An International Survey of Experimental Books,"** April 5 through June 15, in University Gallery. For this show, the term "book" has been loosely defined as a vehicle for information that is organized into "sections." The exhibit features unique traditional books, altered books, sculptural books, digital books and installation, photography and performance-based books created by national and international artists and designers.



STACKED DECK: "Embarassing" is the name of this photograph, which portrays a mish-mash organization of books. The work is part of "Open Book: An International Survey of Experimental Books," an exhibit that runs April 5-June 15 in University Gallery.

EMU's youngest artists will be featured in the **Children's Art Showcase**, scheduled April 26-30, in Ford Gallery. This exhibition displays brightly-colored paintings and free-form sculptures created by children enrolled in EMU's Children's Institute. A silent auction will take place, with all proceeds benefitting the Family Scholarship Fund.

Graduate Thesis Exhibitions are scheduled May through August in Ford Gallery. The current schedule includes Martin Somberg, MFA Graphic Design, May 3-7; and Joyce Jeffrey, MA Photography, May 10-14. Other MFA and MA candidates will be announced at a later date.

For more information on the scheduled exhibitions, lectures and workshops, visit www.emich.edu/fordgallery.

Feature

FOCUS EMU
Online

Jan. 12, 2010 issue

**Concerts, recitals
and workshops
headline winter
music lineup**

By Lisa Donovan



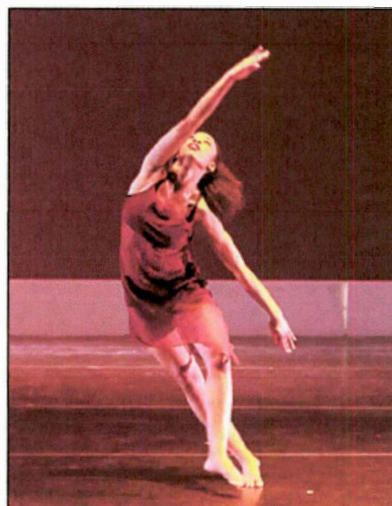
Eastern Michigan University's Music and Dance Department has orchestrated an entertaining collection of events this semester. From ballet to symphony, choir and jazz performances, there is something to suit every musical taste.

"In addition to the EMU ensemble concerts, faculty and guest artist recitals, and workshops, we will present more than 50 student degree recitals this semester," said Marsha Rinke, communications and events coordinator for the music and dance department. "These recitals provide an opportunity for EMU students to individually shine as they gain valuable performance experience."

Some of the music and dance department's winter semester events are highlighted below.

Come in from the cold and experience an eclectic mix of ballet, modern, jazz and musical theater at **Contraposition**, the 58th annual faculty and guest artist concert, Jan. 15-16, 8 p.m., and Jan. 17, 2 p.m., in Quirk Theatre. Performers will include EMU dance majors and minors; guest artists Amy Cova, Matthew Farmer, Holly Hobbs, Christopher Huggins and Shauna Steele; and EMU dance faculty Sherry Jerome Wilkinson and Phil Simmons. Tickets are \$10 for general admission and \$8 for students.

Kevin Miller conducts the **EMU Symphony Orchestra** in Anthony Iannaccone's "Dancing on Vesuvius" and Shostakovich's "Symphony No. 5", Feb. 5, 8 p.m., in Pease Auditorium. The evening also will feature graduate clarinet student Ivan Ivanov, one of the 2009-10 concerto winners. He will perform Mozart's Clarinet Concerto with the orchestra.



DANCE CARD: Contraposition, the 58th annual faculty and guest artist concert, is scheduled Jan. 15-16, 8 p.m., and Jan. 17, 2 p.m., in Quirk Theatre. The event

includes an eclectic mix of ballet, modern, jazz and musical theatre.

**Nam**

In collaboration with Joel Shoenhals on piano, **MeeAe Nam**, assistant professor of voice at EMU, performs a solo recital, Feb. 11, 8 p.m., in Pease Auditorium. Nam has extensive performance experience as a soloist in operas, oratorio, sacred music, art songs, chamber music concerts, and recitals in the United States, Germany, Austria, and her native South Korea. Her artistry encompasses a wide range of vocal repertoire that includes composers as diverse as J. S. Bach and the avant-garde musician Gyorgy Kurtág.

Cellists are invited to participate in **Cellothon**, two days of cello ensemble rehearsals and workshops, March 13, 6-9 p.m., in Alexander Recital Hall; and March 14, 11 a.m., in Pease Auditorium. Performers include EMU students and professors, Michigan high school

students and area professionals. The event features clinician Derek Snyder, founding member of The Phoenix Ensemble and cellist in the tango band Oblivion Project. Snyder also is education director of the Cleveland Cello School. His arrangements and transcriptions for cello orchestra will be featured in the culminating concert for Cellothon March 14, 7:30 p.m., in Pease Auditorium. Free and open to the public. For more information or to participate, contact Diane L. Winder, EMU professor of cello, at 487-1421, 487-1421, or e-mail dwinder@emich.edu.

Voice enthusiasts will enjoy hearing the works of great choral masters performed by the **EMU University Choir and Chamber Choir** April 9, 8 p.m., in Pease Auditorium. The choirs perform under the direction of Professor Trey Jacobs, EMU's director of choral activities.

Travel from New Orleans, the birthplace of jazz, up the great Mississippi to St. Louis, Chicago and beyond as you experience the music and cuisine of jazz legends at **Jazz on the Town**, April 17, 6:30 p.m., in the Student Center Ballroom. The evening's entertainment includes Derrick Gardner, guest trumpet and jazz virtuoso; The Couriers, directed by Dave Caswell, with vocalist Lynne Raglin; EMU Jazz Ensemble, directed by Donald Babcock; EMU Vocal Jazz Ensemble, directed by Wendy van Gent; and dancing lessons with Suzanne Zelnik. This annual event benefits the EMU Jazz Program and the Al Townsend Endowed Scholarship. Tickets are \$65 per person for the semi-formal affair. A cash bar will be available. For reservations, call 487-2255.



ALL THAT JAZZ: Jazz on the Town benefits the EMU Jazz Program and the Al Townsend Endowed Scholarship. The event is scheduled April 17, 6:30 p.m., in the Student Center Ballroom.

EMU alumni join current students for the annual Alumni Band, Symphonic Band and Wind Symphony Concert April 11, 4 p.m., in Pease Auditorium.

"It's an all-day event for the alumni," Rinke said. "Many of them enjoy it so much they come back every year."

The months of March and April are filled with student voice, instrumental and dance recitals. For a complete listing of events, visit www.emich.edu/music/events/. All events are free unless otherwise noted.

Tickets can be purchased in advance at the EMU Convocation Center and Quirk Theatre Box Office or online at www.emich.edu/convocation.

All music and dance department events offer general education Learning Beyond the Classroom (LBC) credit for EMU students.

Feature

FOCUS EMU
Online

Jan. 12, 2010 issue
**Former EMU
professor of textile
arts, dies**

By Ron Podell

Back to Current Issue
FOCUS EMU
Online

Patricia J. Williams, a former Eastern Michigan University professor of textiles arts, died Dec 17. She was 65.

Williams taught at EMU from 1976-2006. She was hired as an associate professor and was promoted to the rank of full professor in 1985.

"Patricia Williams served the art department and the university positively in so many ways," said Tom Venner, dean of the College of Arts and Sciences and former head of the art department. "She guided the textiles program with great care and competence, nurturing many outstanding artists over her three decades at EMU. She established the university's Jacquard Weaving Program, one of the first in the nation, while her service in the department led to one of the university's earliest and exemplary assessment models. Pat was a leader in the creative community, exhibiting weavings that expressed her love and joy in nature, nationally and internationally. After retirement, she was awarded a Fulbright Fellowship to Norway for 2008-2009, which she thoroughly enjoyed. She will be deeply missed."

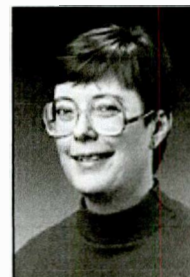
A master weaver, Williams' interest was in translating the colors, forms and textures of nature into woven works of art. Her hobbies included photography, psychology and modern dance.

Williams received her master's of fine arts degree from Indiana University and her bachelor's degree in English from Carleton College in Northfield, Minn..

Her professional affiliations included the College Art Association, American Crafts Council, Textile Museum and Handweavers Guild of America.

Survivors include a brother, Rick Johnson; a nephew, a niece, two stepchildren and three grandchildren.

A celebration of her life and art is being planned for the spring. The celebration will take place in conjunction with the donation of her loom and educational support materials to EMU.



Williams

Featured Photo

FOCUS EMU
Online

Jan 12, 2010 issue



ANTICIPATION: Happy Eastern Michigan University graduates, some looking for friends and family in the crowd, make their way to the stage to receive their diplomas during EMU's winter commencement in the Convocation Center Dec. 20. More than 1,870 were eligible to walk in the ceremony. Keynote speaker Judge Greg Mathis, a 1983 EMU graduate and a television personality, received an honorary degree.

Act in
FOCUS EMU
Online

Featured Photo

FOCUS EMU
Online

Month, Day issue



WARMING UP: VISION students in EMU's Office of Diversity and Community Involvement advertise their "One Warm Coat" service project. The project is focused on collecting new and gently used coats and accessories (hats, scarves, gloves, etc.) for the Ypsilanti Housing Commission which, in turn, will disperse them to residents in the immediate community. Coats will be collected through EMU's Martin Luther King Jr. Day Celebration Jan. 18. Students pictured (from left) are: Erika Buckley, a graduate assistant from Southfield; Lauren Hill, a junior from Ann Arbor; Ashley Larm, a sophomore from Wixom; Carli Scott, a senior from Cleveland, Ohio; Carol Plas, a junior from VanWort, Ohio; Margot Jagodzinski, a junior from Temperance; and Shamara Lewis, a junior from Detroit.

Act in
FOCUS EMU
Online

Featured Photo

FOCUS EMU
Online

Jan. 12, 2010 issue



THANK YOU FOR THE OPPORTUNITY: (from left) After finishing her presentation in business management, Courtney Gallagher of Woodhaven High School shakes hands with Wendy Fichter, who served as a judge during the DECA (Distributive Education Clubs of America) Regional Conference. More than 1,400 area high school students participated in the conference, which took place at EMU's Student Center Jan. 7-8.

Back to
FOCUS EMU
Online

News Briefs

FOCUS^{EMU} Online

The following are news briefs about important activities and events happening at Eastern Michigan University.

Jan. 12, 2010 issue
News Briefs

By Ron Podell

- EMU seeks comment as part of reaccreditation process
- Campus Community Emergency Response Team meetings
- Consultation on student engagement and student success
- Fourth Annual Alumni Award nominations sought
- 30th Undergraduate Symposium and 12th Graduate Research Fair
- Attention, international students
- Celebration of Student Support
- Annual MLK Luncheon tickets on sale
- Emergency management office survey
- Distinguished Faculty Awards nominations sought

- **EMU seeks comment as part of reaccreditation process:** Eastern Michigan University needs your help. The University has applied for continuing accreditation from the Higher Learning Commission of the North Central Association of Colleges and Schools. A North Central Association team will visit EMU March 10-11, 2010, to review EMU's ability to meet the accreditation criteria. The process for reaffirmation of institutional accreditation includes a comprehensive evaluation visit and a review of the public's comments. As part of the process, the University is asking for written comments from faculty, staff, students, alumni and the public. Comments should address substantive matters related to institutional quality or academic programs, and must be signed and include the writer's name, address and telephone number. All comments will become part of the public record. Comments are due by Friday, Feb. 5, 2010, to the following address:



Public Comment on Eastern Michigan University
The Higher Learning Commission
30 North LaSalle Street, Suite 2400
Chicago, IL 60602-2504

Comments also can be submitted online at www.ncahlc.org. Click on "File Third Party Comments" and follow the instructions.



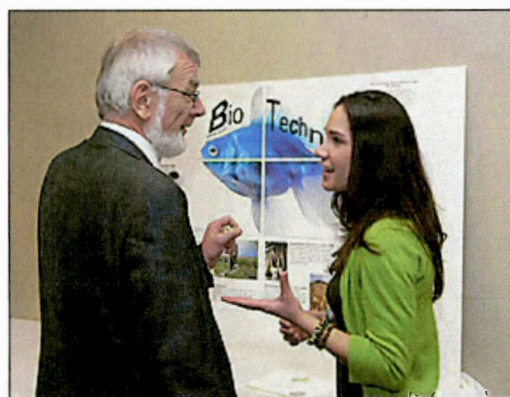
EMERGENCY RESPONSE: The Department of Public Safety Emergency Management Office will host two recruitment meetings for the Campus Community Emergency Response Team Jan. 13.

Campus Community Emergency Response Team meetings: The Department of Public Safety Emergency Management Office will host two recruitment meetings for the Campus Community Emergency Response Team Wednesday, Jan 13, 3:30 p.m. and 7:30p.m., room 330, Student Center. The Campus Community Emergency Response Team (C-CERT) Program educates people about disaster preparedness for hazards that may impact their area and trains them in basic disaster response skills, such as fire safety, light search and rescue, team organization and disaster medical operations.

Using the training learned in the classroom and during exercises, CERT members can assist others in their neighborhood or workplace following an event when professional responders are not immediately available to help. CERT members also are encouraged to support emergency response agencies by taking a more active role in emergency preparedness projects in their community. More information is available at <http://www.citizencorps.gov/cert/>. Any students, staff, faculty, or community members interested are welcome to attend the meetings or contact Emergency Management at emergency.management@emich.edu or call 487-0799.

Back to Current Issues
**FOCUS^{EMU}
Online**

- Consultation on student engagement and student success:** Provost and Executive Vice President Jack Kay and Vice President for Student Affairs and Enrollment Management Bernice Lindke invite you to participate in a series of open, interactive discussion and information sessions presented by Charles Schroeder. Schroeder has 37 years of higher education experience, with more than 75 publications and 200 presentations to his credit. Open sessions are: "What Does 'Education First' Mean?", Thursday, Jan. 14, 8-9:30 a.m., room 310, Student Center, and "Project DEEP: Documenting Effective Educational Practices," 3-4:15 p.m., room 310, Student Center. The conversation continues Friday, Jan. 15, with "Learning Communities — A Primer," 8-10 a.m., room 310, Student Center. These programs are open to the university community. For more information, contact Lynette Findley at lfindley@emich.edu or 487-6694; or Glenna Frank Miller at gmiller@emich.edu or 487-0035.
- 49th Annual Alumni Award nominations sought:** Do you know a graduate or friend of EMU who should be honored for distinction in their field or service to the University? Nominate them for a prestigious Alumni Award. Each year, we honor individuals who have demonstrated the value of their college education through success in their field and post-college achievements, or through their continued interest in and support of EMU. All nominations must be submitted by Friday, Jan. 15. For more information or to download a nomination form, visit emich.edu/alumni/awards/awards_a.html, contact the Office for Alumni Relations at 487-0250 or e-mail alumni.relations@emich.edu.



THERE'S STILL TIME: Online nominations will be taken through Jan. 15 for the Undergraduate Symposium and Undergraduate Research Fair.

to <http://db1.emich.edu/symposium2010/> and sign in using your my.emich username and password. For further information, contact Wendy Kivi at wkivi@emich.edu.

30th Undergraduate Symposium and 12th Graduate Research Fair:

Online nomination sites are now available for the Undergraduate Symposium and Graduate Research Fair, and will remain open for student submissions until Jan. 15, 2010. For nominations for the Graduate Research Fair, go to <http://commons.emich.edu/grf/2010> and choose the "submit event" option in the left margin to begin sign-in process. For further information, contact Susan Anderson at sanderson1@emich.edu. For nominations for the Undergraduate Symposium, go

- Attention, international students:** All registered International students with an "F" or "J" visa status will be billed for student health insurance unless they have received an "approved" waiver from Snow Health Center no later than 4 p.m. Jan. 27. For more information, contact Pat Short at 487-3048.

Celebration of Student Support:

It's that time of year again. Have you had a tutor, supplemental instructor, instructor, or EMU staff member who inspired you or contributed to your academic



success?

Recognize that special person today by filling out a Celebration of

Student Support (formally Faculty Tutor Appreciation Day) nomination form. Forms can be filled out and submitted at

<http://emich.edu/tlc/programs/css/NominationForm.htm>. The nomination deadline is Friday March 12, at noon. The Celebration of Student Support takes place March 29, 2010, and wraps up EMU's Week of Excellence. For more information, e-mail Holman Success Center at learning_center@emich.edu. Nominate someone today.



MLK

Annual MLK Luncheon tickets on sale:

The President's MLK Luncheon will take place Monday, Jan. 18, 2010, at 11:45 a.m. Doors will open at 11:30 a.m. This year, the President's office is offsetting the cost of the tickets. Prices will be \$19 for faculty and staff and \$9 for students. Student tickets may be purchased with a requisition, but not a payment card. Faculty/staff tickets cannot be purchased with a requisition or a payment card. Tickets are on sale at the usual locations: Convocation Center, Monday through Friday, 10 a.m. to 5 p.m.; Quirk Theatre, Monday through Friday, noon to 5:30 p.m.; and the Student Center, Monday through Friday, 1-9 p.m. Purchase your tickets early as this event annually sells out. For additional information, contact Kay Woodiel at 487-6790 or Ron Reid at 487-2282. The schedule for the 2010 MLK Jr. celebration can be found at

<http://www.emich.edu/mlk/>

- **Emergency management office survey:** The Eastern Michigan University Emergency Management Office is conducting a survey designed to find out what the students, faculty, and staff know about EMU's emergency plans, communication tools, and to gather their personal attitudes about EMU's readiness to respond to an emergency. The survey takes about four minutes to complete and, with your help, we will be able to continue to provide a safe learning environment for everyone. To take the survey, go to <http://www.surveymonkey.com/s/S38CMBZ>.
- **Teaching Excellence Awards nominations:** The EMU Alumni Association's Recognition and Awards Committee is now accepting nominations for the 20th Annual Teaching Excellence Awards. All faculty members who have held a full-time appointment at EMU for three or more complete academic years are eligible. For criteria and an application, go to <http://www.emich.edu/alumni/awards/tea.html>. Nominations should be forwarded to the Office for Alumni Relations, 1349 S. Huron St., Suite 2, Ypsilanti, MI by Friday, March 5. For questions, call 487-0250.

Why I teach at Eastern Michigan University

FOCUS EMU
Online

Jan. 12, 2010 issue



When I joined the Eastern Michigan University faculty in 1985, I really liked the type of students that the university attracted and the general atmosphere of the College of Business. Since then, I've been honored to work with wonderful business students, who are serious about their education, and a fine group of faculty. I'm also thankful for Dean David Mielke, whose vision enables us to create world-class programs in the College of Business.

In 2005, I began working with other international business faculty as well as the business community and EMU alumni to develop our International Business program. I've really enjoyed watching the program grow and develop. To keep the program relevant, we formed an International Business Advisory Board comprised of prominent members of the business community. Faculty members on the international business committee also provide valuable input.

The students in the international business program are highly motivated and really care about putting in the extra effort to learn a second language and study abroad. A wonderful mix of students is attracted to the program. There is a good balance of students from the United States and other countries, and they vary from students fresh out of high school to those returning to college after a stint in the work world. Their diversity of background and experience makes the student body in the international program unique.

I was very excited about the first Tricontinental Conference on Global Advances in Business Communications that we held in the Student Center in June 2009. Eastern Michigan's co-sponsors for the conference were the University of Antwerp and the Technological University of Malaysia. People came from all over the United States and 16 other countries, including Brazil, Mexico, Japan, Finland, France, India and Belgium. The conference brought together academics and practitioners to consider ongoing scholarly activities and business practices, which shape and are shaped by the changing nature and level of global business communications. Future conferences will take place at the sites of our university partners in Antwerp and Malaysia before returning to EMU.

An exciting outcome from the conference is the publication of the Global Business Communications Journal, which is sponsored by the same universities as the conference. As chief editor, I'll be working with a review board comprised of business experts from across the United States and around the world. — *Contributed by Lisa Donovan*